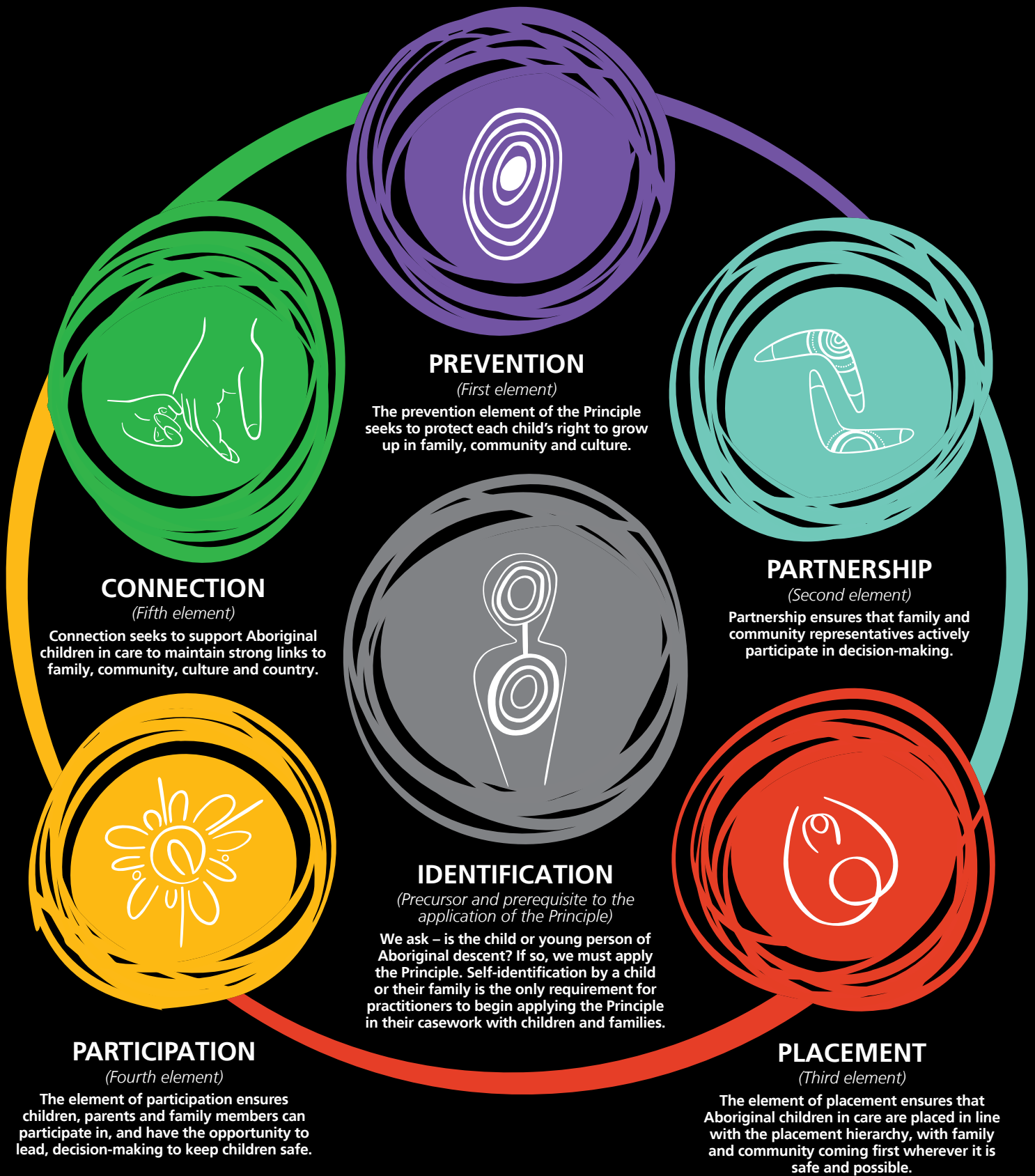


Aboriginal Child Placement Principle

five core elements and precursor



The artwork depicts the five elements of the Aboriginal Child Placement Principle (ACPP) and shows how the Identification precursor is the foundation of the ACPP and the prerequisite for its application. The outer circle wraps all the elements together and shows how they are connected and underpin practice in relation to Aboriginal children and young people in care.

Acknowledgements:

This artwork was created by Pitjantjatjara and Yankunytjatjara artist Elizabeth Close, in collaboration with Ochre Dawn Creative Industries, and in partnership with the Department for Child Protection.